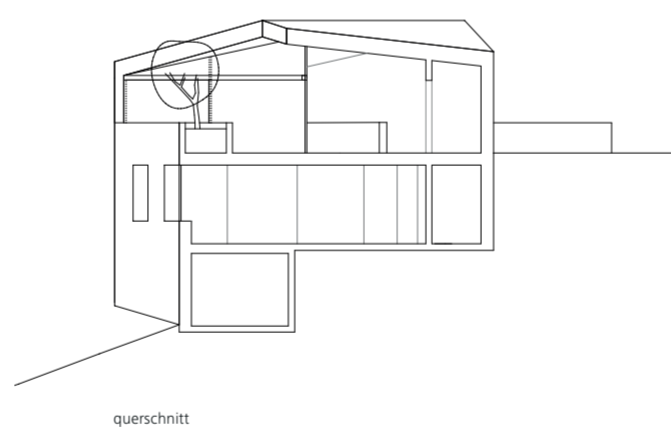
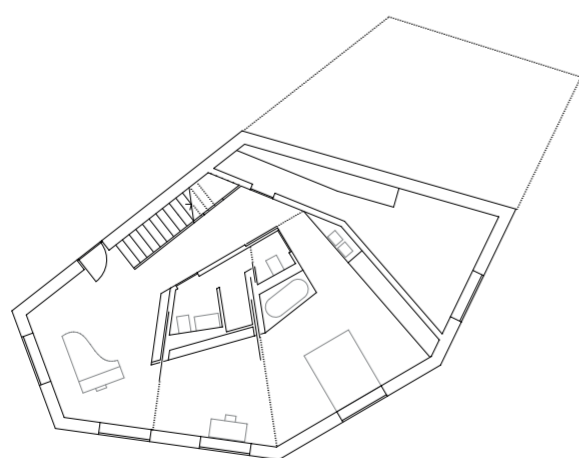


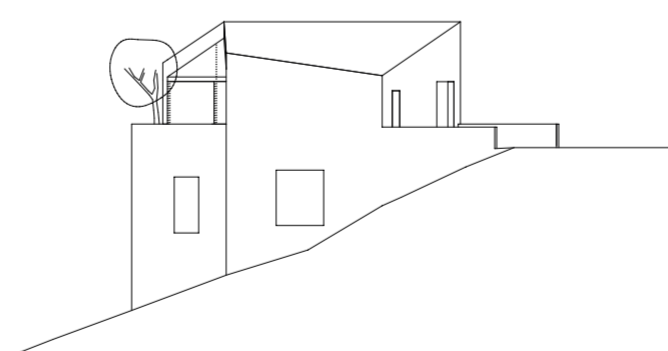
erdgeschoss



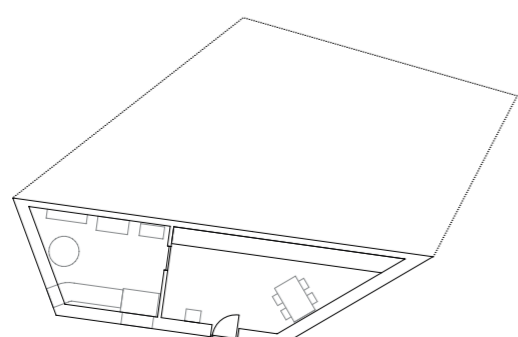
querschnitt



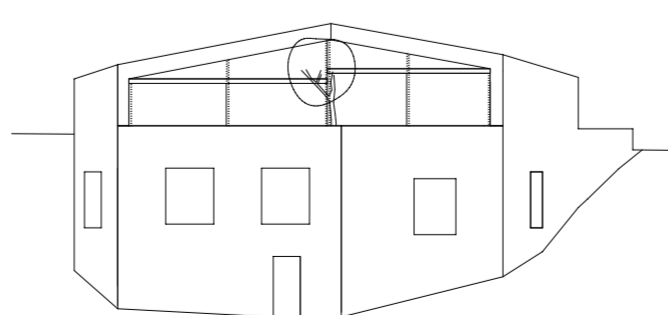
untergeschoss



ostfassade



keller



südfassade



## HAUS ISELI VENTHÖNE

**bauherr**  
iseli jean-yves und véronique

**ort**  
venthône, wallis, schweiz

**programm**  
wohnzimmer, küche, zimmer,  
büro, keller

**bruttofläche**  
169 m<sup>2</sup>

**volumen sia 416**  
837 m<sup>3</sup>

**höhe**  
780m

**enregiebedürfnisse**  
Qh 120 (MJ/m<sup>2</sup>)

**datum**  
projekt 2010,  
verwirklichung 2011 - 2012

**mitarbeiter**  
zivilingenieur - alpatec sa  
hls ingenieur - énerconceil