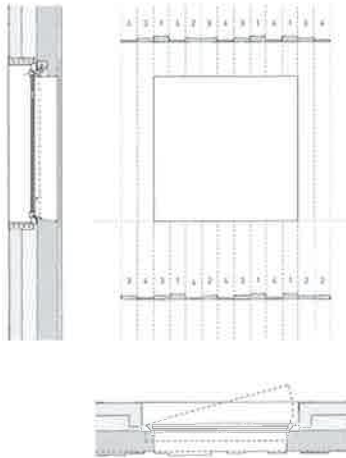


Foundation Domus Office

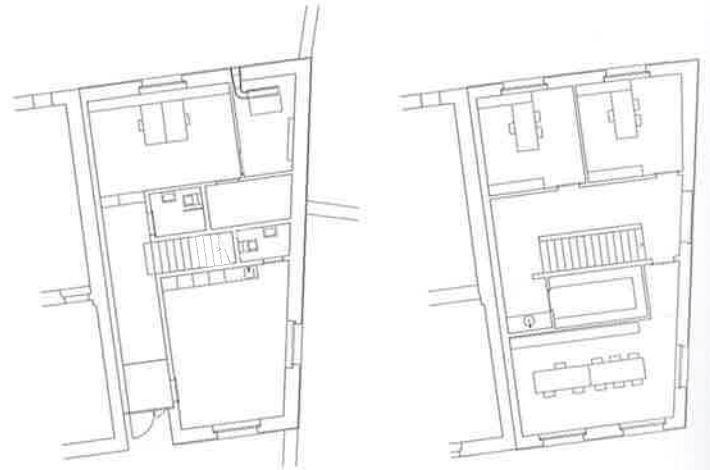
meyer françois architecture

Location	Ardon, Switzerland
Completion	2009
Client	Fondation Domus
Planning partners	Joseph Cordonier, Claude Fabrizzi, Laurent Savioz
Type of use	Office
Gross floor area	106 m ²
Concrete used	Self-compacting concrete
Admixture used	Oxide pigments
Photos	Thomas Jantscher

Located in the village center, the old hotel and its annexes were transformed to become a venue for adults with mental disabilities. Identity was established through an even brown color, which integrates the rural context. A central courtyard was planted to create a garden. The old barn was rebuilt in concrete to hold the administration center. According to the building legislation, the new building had to replicate the original volume exactly. Its strength and monolithic appearance is tempered by the iridescent color of the concrete, obtained by means of iron oxide pigments and cladding elements of raw timber boards with different thicknesses, which are subtly ironically reminiscent of barns. It was built based on the Minergie label norms.



↑ Detail drawing façade
↓ South side with entrance



↑ Ground and first floor plan





↑ Interior view upper floor
↓ East façade



↑ Interior view staircase and hallway







↑ Detail façade
← East façade



↑ Site before construction
↓ North side

